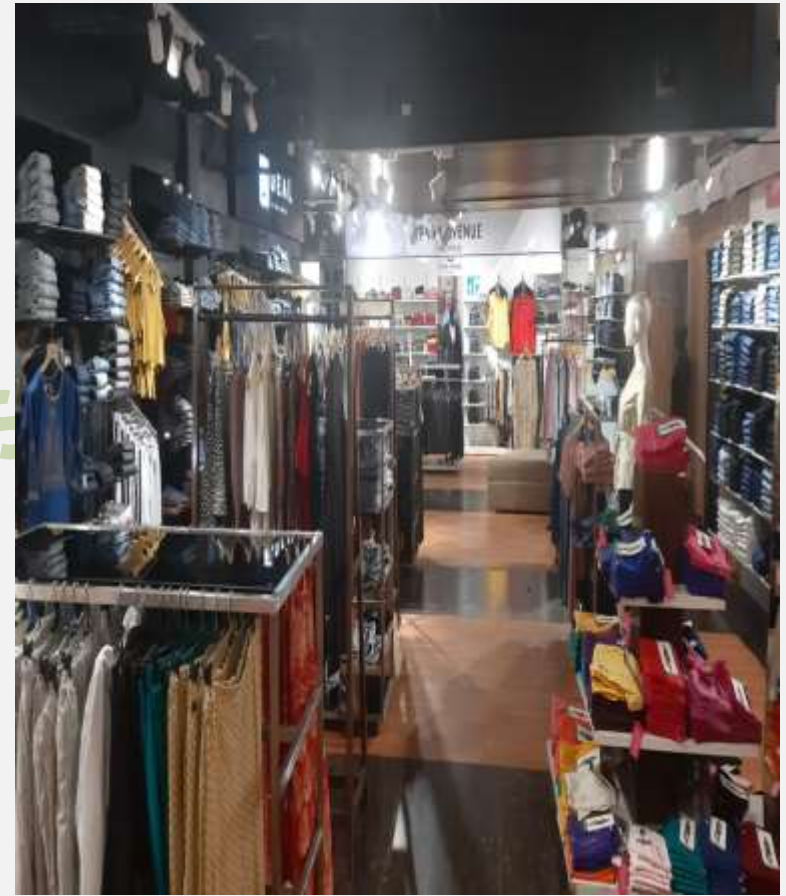




**MBO BUSINESS DEVELOPMENT FEEDBACK REPORT**  
**SHREE BALAJI AGORA MALL**  
**AHMEDABAD**

*EM*

# OVERVIEW



## INSIDIE STORE VIEW





## INSIDIE STORE VIEW



## INDIE STORE VIEW



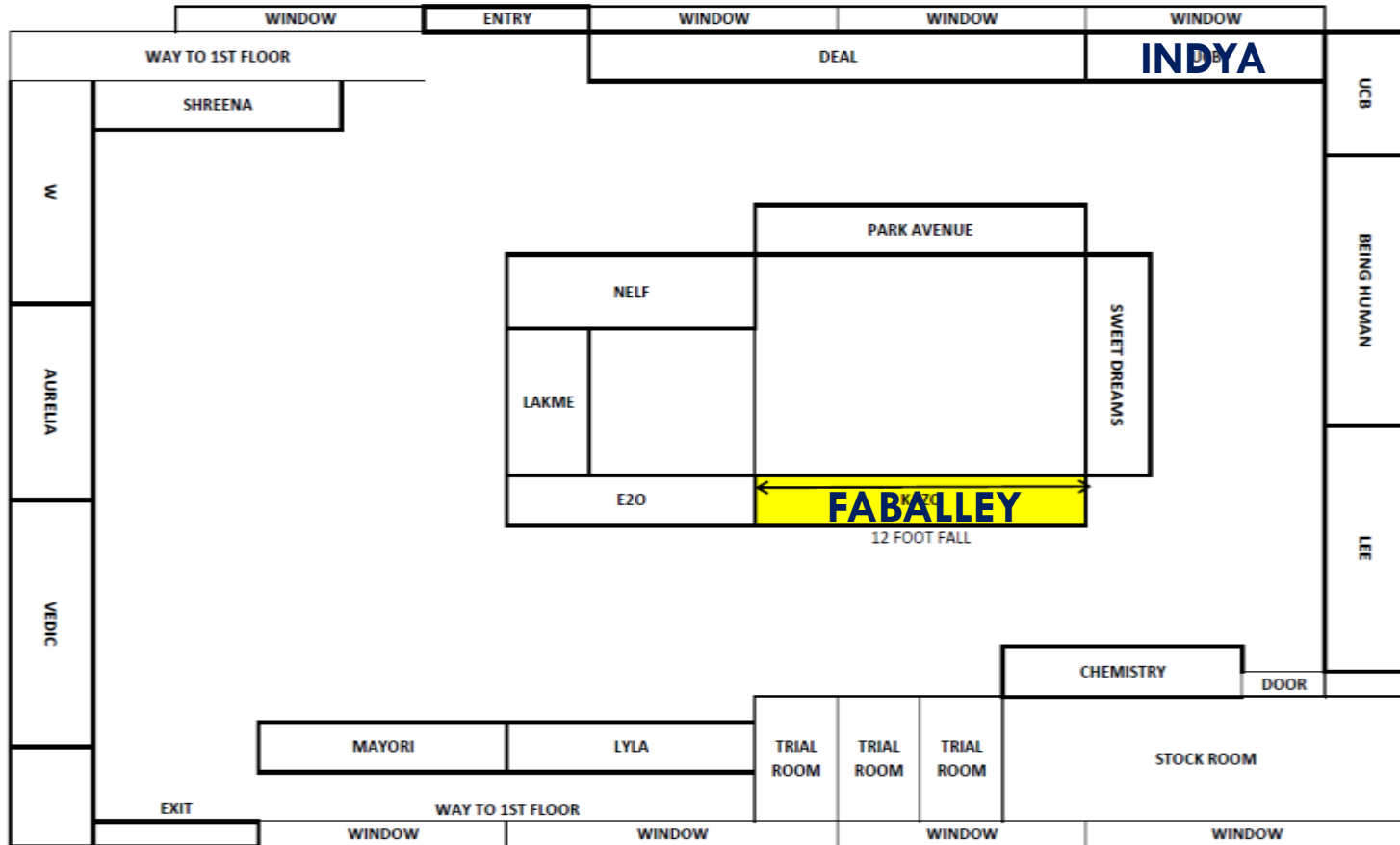


## INSIDE STORE VIEW



# FLOOR LAYOUT – WOMEN WESTERN WEAR

## WO STORE PLANOGRAM



## COMPETITORS PERFORMANCE

Brand	Avg Sales (in Lacs )
UCB	
VEDIC	
PEPE	
CRIMSOUNE CLUB	
Park Avenue	
W	
Auralia	

COPYRIGHTS RESERVED



# AGORA Understanding with HSEPL

Commercial –  
Margin flat)  
Security Deposit –  
Fixtures –  
Manpower –

- TYPE OF TG
- -Upper Middle Class & Upper Class
- Age Group- 25 to 55 yrs
- EXPECTED MONTHLY SALE –
- Website :- [www.sbam.in](http://www.sbam.in)

Monthly Footfall :- 4 Lac's approx

- WE SHOULD GO WITH OPTION AS IT WILL BE OPERATIONAL MALL.
- AIRPORT ALSO NEARBY SO TOURIST TRAVEL FROM ACROSS COUNTRY
- MALL HAVE RIGHT BRAND MIX WHICH WILL RIGHT CATEGORIES MIX
- VEROMODA & ONLY ALSO LAUNCHING SOON
- MALL IS HAVING 3 STAR HOTELS , MULTIPLEX ,LOUNG INSIDE & BIG BAAZAR .



# AGORA MALL

**TWM Store Brands:-** For Men's SIS counters of Jack & Jones, Tom tailor, Pepe Jeans, UCB, Being Human, Park Avenue, Indian Terrain, Van husan, Lee, US polo, Blue Buddha, Color Plus, Parx, Basics, Jocky, Rex Straut,( in this month we are launching Voi Jeans) etc

**Kidz Mart:-** SIS counters of Deal Kids, Gini & Jony, Pepe Kids, US Polo Kids, Vitamins, tiny girls, ruff, timbaktoo, kittens, cuties, Palm tree ( in this month we are launching Allen Solly kids) etc.

**TWT Store for Designer & Customized collection for men & women. Fabrics Brands :-** Arvind, Reid & Tailor, Raymond, Linen Club, Treska, J Hampstead etc.

**Shuze Store :-** SIS counters of Woodland, Lee Cooper, Buckaroo, Egoss, Hush Puppies, Bata, Dr. Scoll, Puma, Red tape, Alboto Torres, Reebok, House of Design, Gaziano, Ellen Cooper, Clerks, Frank Leone etc.

**Accessories :-** Hand Bags, Belts, Socks, Perfume, Deos, Hanker chips, Under garments in all category etc.

**House to Home Store :-** Home Decor & Home Accessories



The logo consists of the letters 'E' and 'M' in a large, blue, serif font. The 'E' is positioned above the 'M', and they are both centered horizontally. The letters are set against a white background that is part of a larger white square centered on the slide.

**EXPAND YOUR REACH**

**[www.expansionmaster.com](http://www.expansionmaster.com)**

**THANK YOU**